

Cabin Mounted Emergency Shower and Eye/Face Wash for Indoor and Outdoor Applications

For Indoor and Outdoor Applications



Standards



CE Mark



ANSI / ISEA Z358.1-
2014



ANSI / ISEA Z358.1-
2014 (Plumbing)



EAC/GOST-R



Meets requirements
of ANSI standard.



EN 15154-1



EN 15154-2



EAC

TECHNICAL DETAILS

In accordance with EN 15154-1-2 and ANSI Z358.1-2009

Available for indoor and outdoor applications

Produced from galvanized steel as standard (Optionally 304 stainless steel, 316 stainless steel or GRP material)

Mains Water System is recommended as 2-3 bars

GRP Grating non slipping floor

Testing lever

Integrated drain sump

Shower Head : 300 mm diameter

Eyewash Bowl : 300 mm diameter

Water Inlet : 1 ½" with flange

Water Outlet : 1 ¼"

Water Flow : Minimum 11,4 lt/min for eyewash

Minimum 75,7 lt/min for shower

OPTIONS

- Ex-proof Or Non Ex-proof Audible And Visual Alarm
- Eyewash may be located internally on LHS or RHS or externally LHS or RHS when viewed in front
 - Eyewash foot treatle
- Water inlet with flange connection
 - Internal or External lighting
 - Low water level alarm
 - Spring loaded doors
 - Curtain
 - Cable heating
 - Wooden Pallets
 - Panic Bar / Push Bar
 - Platform Activation
- Drain Sump and Grating
- Overhead ABS Shower Rose
- Scald Or Freeze Protection Valve
 - Stainless steel erecting lugs
- Ex-proof or non ex-proof flow switch

OPTIONAL ACCESSORIES



Flow Switch



Freeze Protection Valve



Electrical Connection Box



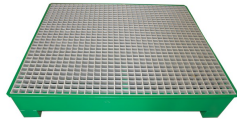
The Flanged Water Inlet



Visual Alarm for Shower



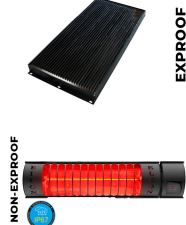
The Eye Wash Cover



The GRP Grate and Water Collection Basin



Internal and External Lighting



The Cabin Heater



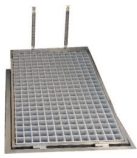
Scald Protection Valve



The Water Pressure Gauge



The Panic Bar



The GRP Platform Activation



The Hot & Cold Water Mixing Valve



The Foot Pedal Controller



The Foot Pedal Controller



Insulated Panels and Spring-Loaded Doors



Wastewater Pump



The E-GSM Warning Device



The Wastewater Tank



The Check Valve



The Rubber Dust Cover



The Compliance Test Kit



The Trigger Valve



The Proximity & Motion Sensor



Pressure Regulator



The Dirt Catcher Filter