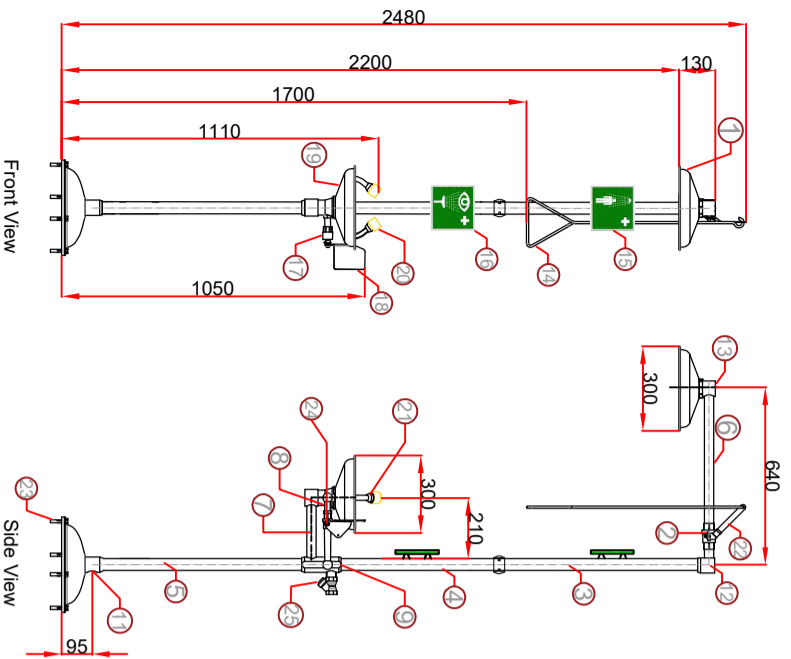
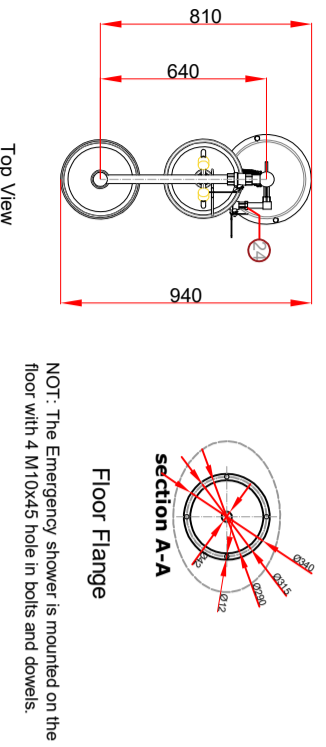


15031000-316 Technical Drawings

DOCUMENT NO	TC.02.002
REVISION NO	00
REVISION DATE	--
RELEASE DATE	30.06.2021



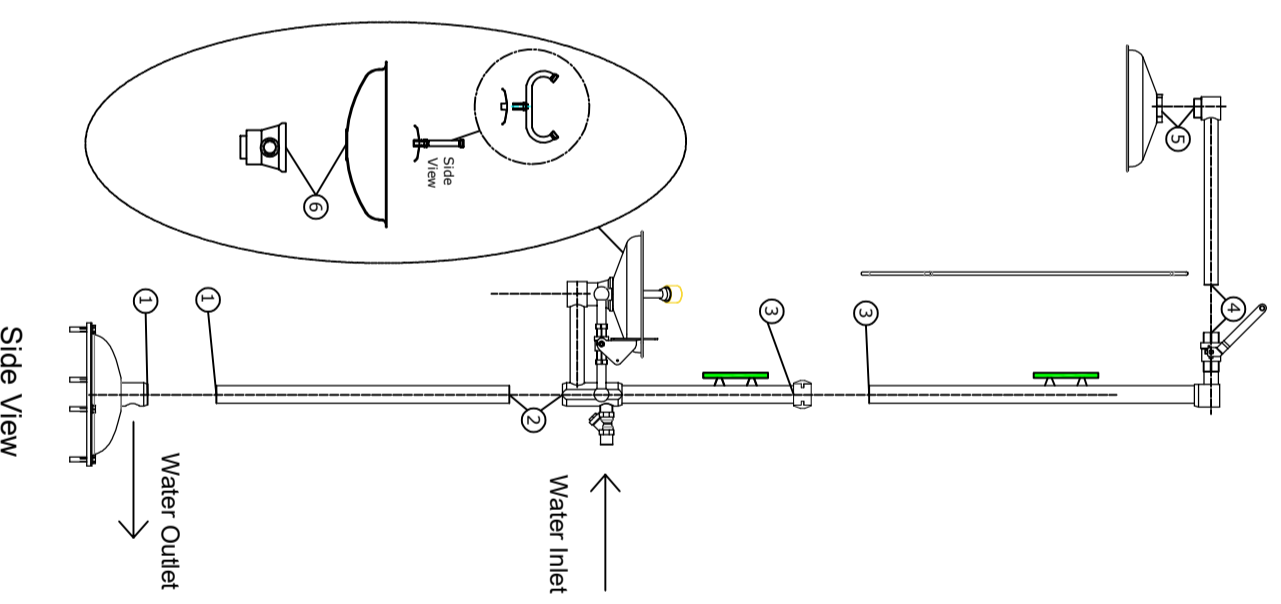
NO.	DESCRIPTION	MATERIAL
25	1" Filter	316 STAINLESS STEEL
24	1/2" Ball Valve for eyeface wash	316 STAINLESS STEEL
23	M10x45 Hole in Bolt(4 piece)	316 STAINLESS STEEL
22	1" Valve Handle	316 STAINLESS STEEL
21	Spray Nozzles	Brass
20	Dust Cover on Eyewash Spray	Plastic
19	Eyewash Bowl	316 STAINLESS STEEL
18	Push Handle Control for Eyewash	316 STAINLESS STEEL
17	Eyeface corner connection	316 STAINLESS STEEL
16	Eyeface wash sign	Phosphorus
15	Emergency shower sign	Phosphorus
14	Pull Rod control for shower	316 STAINLESS STEEL
13	Shower Head Fitting	316 STAINLESS STEEL
12	Top Corner Fitting	316 STAINLESS STEEL
11	1" Water Outlet	316 STAINLESS STEEL
10	Middle connection	316 STAINLESS STEEL
9	Main Connection fitting	316 STAINLESS STEEL
8	1/2" 85 mm pipe	316 STAINLESS STEEL
7	1" 220 mm pipe	316 STAINLESS STEEL
6	1" 500 mm pipe	316 STAINLESS STEEL
5	1 1/4" 740 mm pipe	316 STAINLESS STEEL
4	1 1/4" 590 mm pipe	316 STAINLESS STEEL
3	1 1/4" 660 mm pipe	316 STAINLESS STEEL
2	1" Ball Valve	316 STAINLESS STEEL
1	Shower head Bowl (Ø300mm)	316 STAINLESS STEEL



NOT: The Emergency shower is mounted on the floor with 4 M10x45 hole in bolts and dowels.
 Bolts and dowels will be sent with the product.
 - 4 piece hole in anchor bolts
 - 4 piece dowels

Standards: EN 15154-1-2
 ANSI/SEA Z358.1-2014
 Water Flow: 75.7 lt / min for Shower
 11.4 lt / min for eyeface wash
 Total Weight: 21,6 kgs
 Packed Dimensions: 35x83x21 cm

Static test pressure : 7 bar
 Min using pressure : 1,4 bar
 Max using pressure : 2,8 bar



- 1) Screw number 1 pieces together. (1-1)
- 2) Screw number 2 pieces together. (2-2)
- 3) Screw number 3 pieces together. (3-3)
- 4) Screw number 4 pieces together. (4-4)
- 5) Screw number 5 pieces together. (5-5)
- 6) Eyewash dish screwed to low and (6-6), eyewash screwed on the middle of the eyewash dish and connected completely. Spray nozzles must be to run parallel with person who see in front of shower.
- 7) Please use impermeability teflon bands at pipe connection points
- 8) The shower which is finished assembly is connected pedestal by 4 holes that are on pedestal connecting part. For the connecting could use M10x45 hole in anchor bolt steel plugs.
- 9) The shower can directly connected to water network by 1" water inlet.
- 10) You can drain the waste water by connecting a suitable 1" diameter pipe or hose to the waste water outlet.

IST

FOR INFORMATION FOR REVIEW FOR APPROVAL

REV. DATE

FOR RFO/DESIGN

ORIGINAL EDITION

DESIGNED CHECKED APPROVED

SS FA ST

SS FA ST

SIZE SCALE

A4 1/100

IST İsaç Sağlıkli Tehizatı Sanayi ve Ticaret Ltd Sti
 İvedik OSB Mh. 2269. Cd. No:42 Yenimahalle 06374,
 Ankara, Türkiye www.ist.com.tr
 Ph: 0090312 384 13 00 Fax: 0090312 341 73 03

PRODUCT

ISTEC TYPE ESW EMERGENCY SHOWER AND EYEFACE WASH

CE 1783

Eyewash

ANSI

DRAWING NUMBER/DATE:

420/16-1

SHEET: 1

DRAWING NAME:

15031000-316

PREPARED

Çağkan TOPCU

APPROVED

Serdar TÜRKÜÇAR