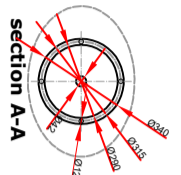
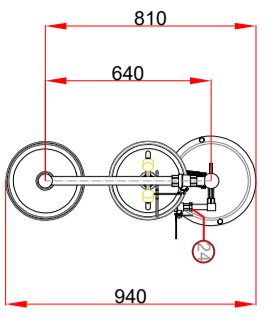
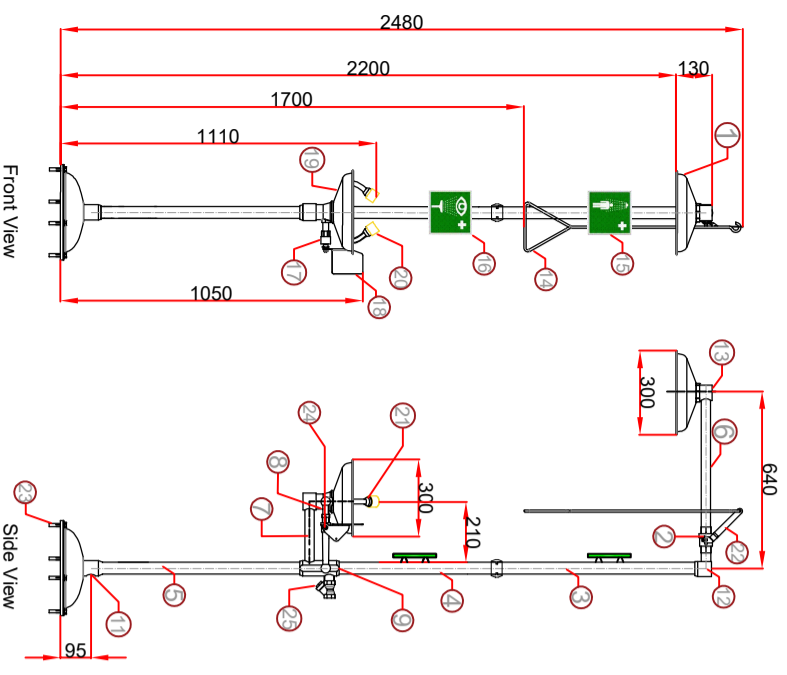


# 15031000 Technical Drawings

DOCUMENT NO	TC.02.002
REVISION NO	00
REVISION DATE	--
RELEASE DATE	30.06.2021

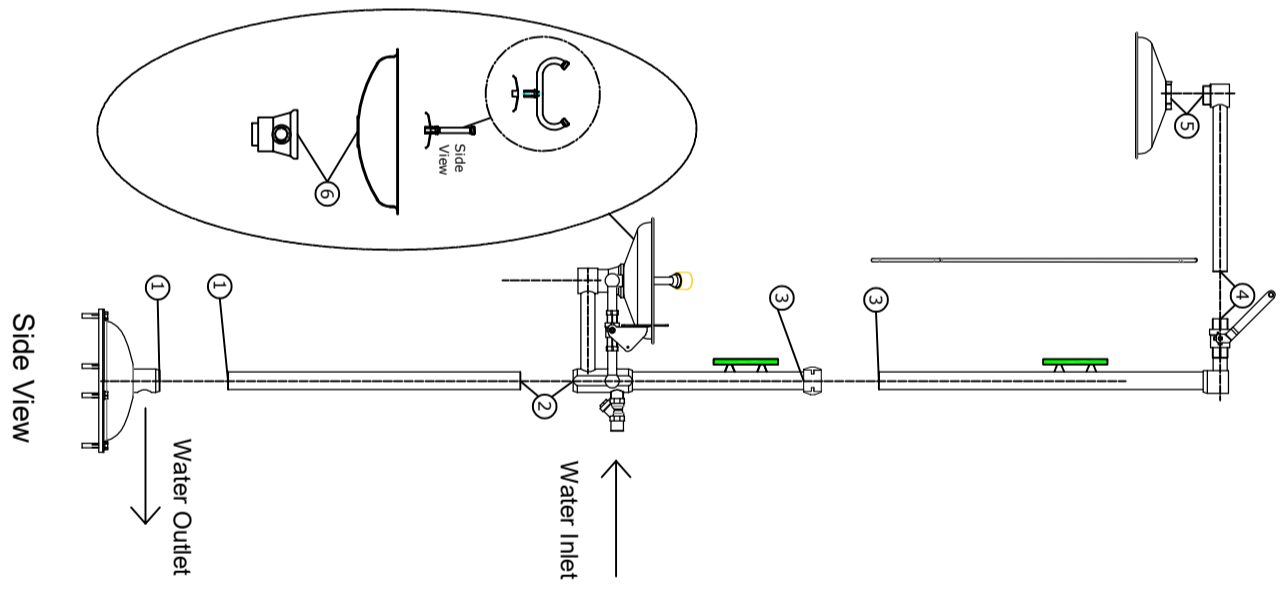


NOT: The Emergency shower is mounted on the floor with 4 M10x45 hole in bolts and dowels.  
 Bolts and dowels will be sent with the product.  
 - 4 piece hole in anchor bolts  
 - 4 piece dowels

NO.	DESCRIPTION	MATERIAL
25	1" Filter	304 STAINLESS STEEL
24	1/2" Ball Valve for eye/face wash	304 STAINLESS STEEL
23	M10x45 Hole in Bolt(4 piece)	304 STAINLESS STEEL
22	1" Valve Handle	304 STAINLESS STEEL
21	Spray Nozzles	Brass
20	Dust Cover on Eyewash Spray	Plastic
19	Eyewash Bowl	304 STAINLESS STEEL
18	Push Handle Control for Eyewash	304 STAINLESS STEEL
17	Eye/face corner connection	304 STAINLESS STEEL
16	Eye/face wash sign	Phosphorus
15	Emergency shower sign	Phosphorus
14	Pull Rod control for shower	304 STAINLESS STEEL
13	Shower Head Fitting	304 STAINLESS STEEL
12	Top Corner Fitting	304 STAINLESS STEEL
11	1" Water Outlet	304 STAINLESS STEEL
10	Middle connection	304 STAINLESS STEEL
9	Main Connection fitting	304 STAINLESS STEEL
8	1/2" 85 mm pipe	304 STAINLESS STEEL
7	1" 220 mm pipe	304 STAINLESS STEEL
6	1" 500 mm pipe	304 STAINLESS STEEL
5	1 1/4" 740 mm pipe	304 STAINLESS STEEL
4	1 1/4" 590 mm pipe	304 STAINLESS STEEL
3	1 1/4" 680 mm pipe	304 STAINLESS STEEL
2	1" Ball Valve	304 STAINLESS STEEL
1	Shower head Bowl(Ø300mm)	304 STAINLESS STEEL

Standards: EN 15154-1-2  
 ANSI/ISEA Z358.1-2014  
 Water Flow: 75,7 lt / min for Shower  
 11,4 lt / min for eye/face wash  
 Total Weight: 21,6 kgs  
 Packed Dimensions: 35x83x21 cm

Static test pressure : 7 bar  
 Min using pressure : 1,4 bar  
 Max using pressure : 2,8 bar



- 1) Screw number 1 pieces together. (1-1)
- 2) Screw number 2 pieces together. (2-2)
- 3) Screw number 3 pieces together. (3-3)
- 4) Screw number 4 pieces together. (4-4)
- 5) Screw number 5 pieces together. (5-5)
- 6) Eyewash dish screwed to low and (6-6), eyewash screwed on the middle of the eyewash dish and connected completely. Spray nozzles must be to run parallel with person who see in front of shower.
- 7) Please use impermeability teflon bands at pipe connection points
- 8) The shower which is finished assembly is connected pedestal by 4 holes that are on pedestal connecting part. For the connecting could use M10x45 hole in anchor bolt steel plugs.
- 9) The shower can directly connected to water network by 1" water inlet.
- 10) You can drain the waste water by connecting a suitable 1" diameter pipe or hose to the waste water outlet.

**IST**

FOR INFORMATION:  FOR REVIEW:  FOR APPROVAL:  FOR RFO/DESIGN:

DATE: \_\_\_\_\_

REV: \_\_\_\_\_

DESCRIPTION: \_\_\_\_\_

DESIGNED: \_\_\_\_\_ CHECKED: \_\_\_\_\_

ORIGINAL EDITION: \_\_\_\_\_

SIZE: A4 SCALE: 1/100

PRODUCT: ISTEC TYPE ESW EMERGENCY SHOWER AND EYEFACE WASH

DRAWING NUMBER/DATE: 420/16-1

SHEET: 1 DRAWING NAME: 15031000

OF: 1

PREPARED

APPROVED

Çağkan TOPCU

Serdar TÜRKÜÇAR

IST İst. İst. Sağlıkliğı TeĖhizatı Sanayi ve Ticaret Ltd Şti  
 İvedik OSB Mh. 2289. Cd. No:42 Yenimahalle 06374,  
 Ankara, Türkiye  
 WWW.ISTCENLİE  
 Ph: 0090312 384 13 00 Fax: 0090312 34173 03